

CORE POLICY AND DEDUCTION

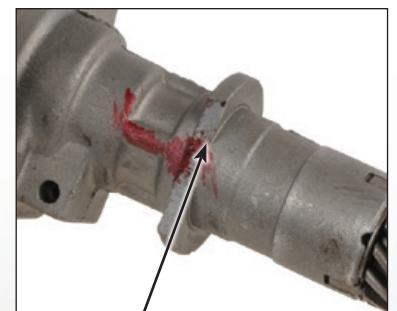
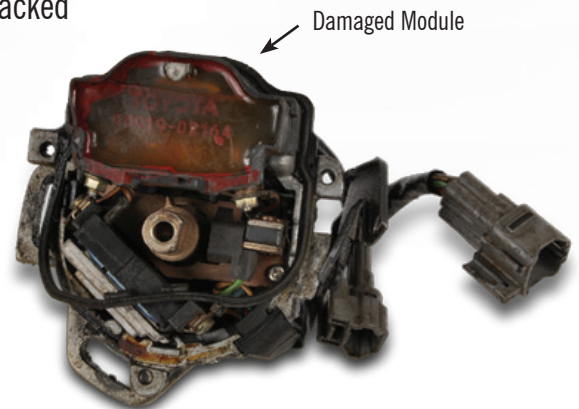
DISTRIBUTORS

NO CORE CREDIT

- Housings that are worn, broken, scored, damaged or cracked
- Disassembled units
- Missing vacuum

50% LESS CREDIT

- Broken plastic housing (30-1636, 1639, 1829, 1878)
- Any shafts broken
- Damaged or missing coil, ignitor or module
- Missing Hall Effect switch
- Missing Fuel Injector harness (30-1800, 1801, 1808)
- Missing Electronic plate (30-3491, 3493)



All cores must be returned in the original box to receive full core credit.

All cores not returned in the box receive maximum 10% core credit.

Core credit allowed only for units in the current programs.

Only exchange cores accepted for core credit.